

## BOX MAKERS BRASSWARE

Incorporating Veneer Inlay Australia & Hardware for Creative Finishes

### FULL MORTISE BOX LID STAY

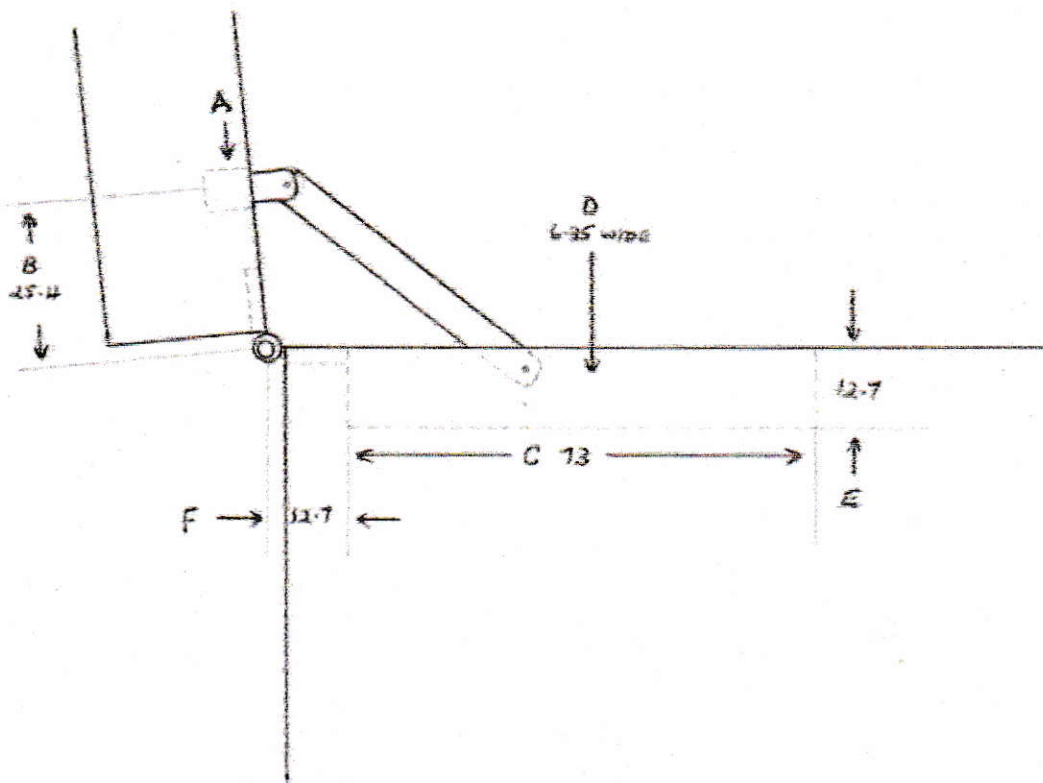
#### INSTALLATION INSTRUCTIONS

Drill a hole 8mm (5/16") deep and 6.35mm (1/4") diameter in the box lid with its centre 25.4mm (1") *from the centre of the box hinge pin.*

Cut a mortise into the side of the box that is 73mm (2-7/8") long, 6.35mm (1/4") wide and 12.7mm (1/2") deep, with its end 12.7mm (1/2") *from the centre of the box hinge pin.*

Glue or epoxy the hanger pin into the drilled hole to depth of its shoulder.

Once installed, the hanger must drop into the hole in the lid support body without binding.



- A. diameter 6.35mm (1/4")
- B. distance 25.4mm (1")
- C. length 73mm (2-7/8")
- D. width 6.35mm (1/4")
- E. depth 12.7mm (1/2")
- F. distance 12.7mm (1/2")